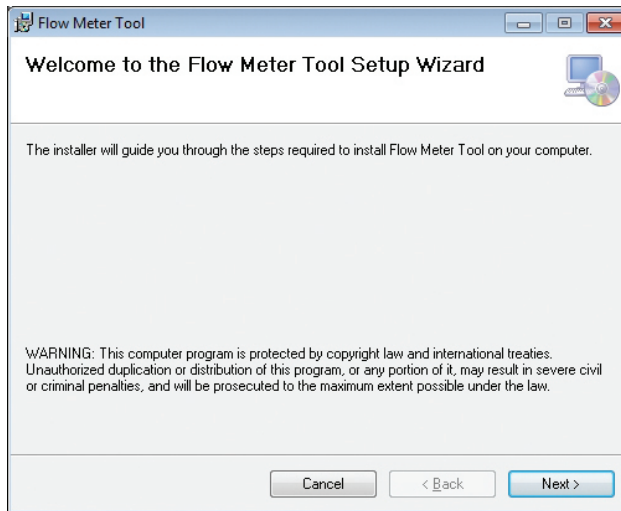
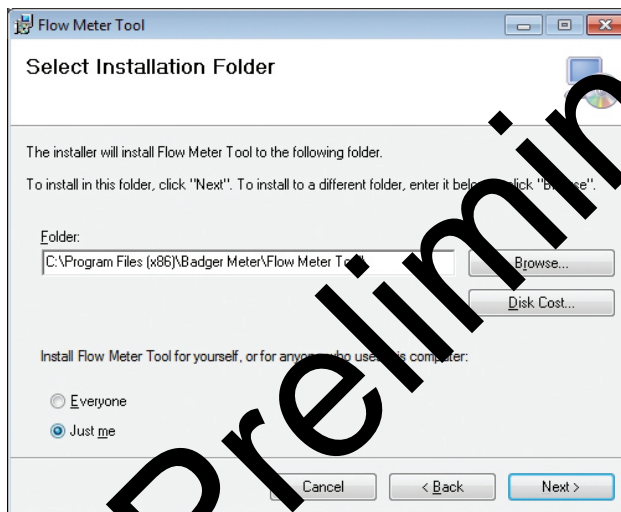


INSTALLING THE FLOW METER TOOL

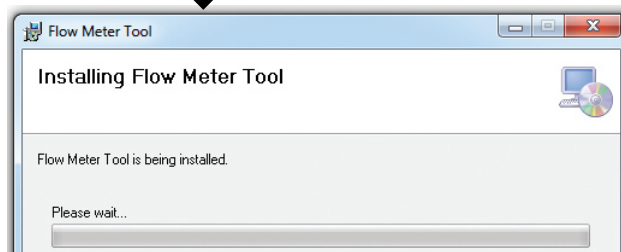
1. Insert the CD containing the Flow Meter files.
The autorun tool displays the Welcome screen.
2. Click **Next** to confirm that you want to install the tool.



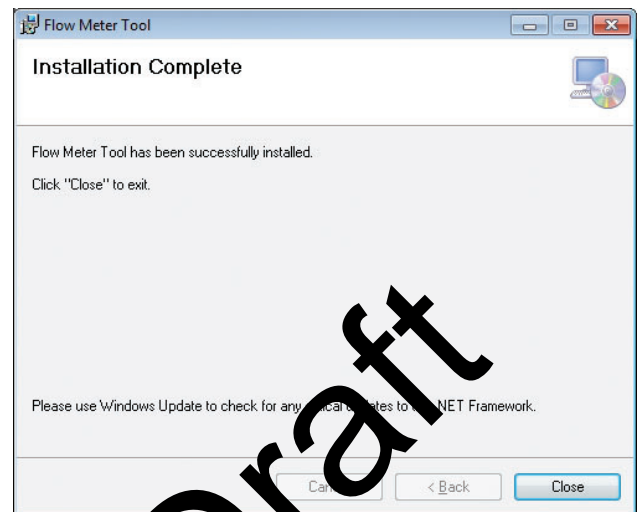
3. On the *Select Installation Folder* screen, select the folder where you would like the tool installed. Click **Next**.



4. Wait while the tool installs.



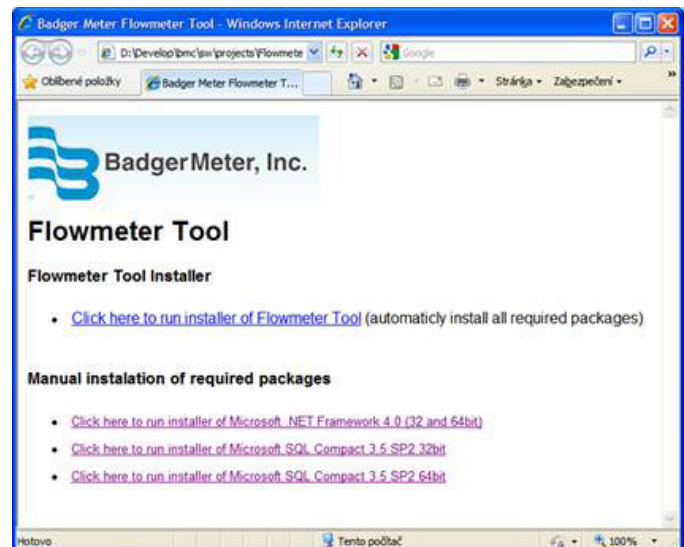
5. When the installation is complete, click **Close**.



ALTERNATE FLOW METER TOOL INSTALLATION METHOD

If the CD does not automatically open:

1. Navigate to the CD disk location.
2. Click on the **Badger Meter Flow Meter Tool** folder to open it.
3. Double-click the **index.htm** file to open it.
4. On the *Flow Meter Tool* window, select **Click here to run installer of Flow Meter tool**.



5. Perform Steps 3 through 5 under *"Installing the Flow Meter Tool"* on page 3 in this document to complete the installation.

